

A dynamic photograph of four athletes (two men and two women) in motion, playing padel. They are wearing athletic gear and holding padel rackets. The background is a vibrant, abstract geometric pattern in shades of blue, purple, and orange. The text "PADEL ISN'T A TREND, IT'S A POWER MOVE IN MOTION" is overlaid in white, bold, sans-serif font.

**PADEL ISN'T A TREND, IT'S A POWER  
MOVE IN MOTION**

**BUILD THE COURT. OWN THE GAME**

# ALL IN ONE SERVICE





# PADEL COURT DESIGNS



## THE CLASSIC PADEL

MOST SUITABLE FOR BUDGET CONSCIOUS WITH INDIVIDUAL STRUCTURAL PILLARS PER GLASS PANEL PROVIDING A COST-EFFECTIVE SOLUTION FOR ANY BUDGET.



## THE PANORAMIC PADEL

THE BEST SELLING & MOST FREQUENTLY PURCHASED BY PADEL CLUBS, HOTELS & PRIVATE HOMES. PATENTED STRUCTURAL SYSTEM DESIGNED TO OBTAIN THE BEST GAME PERFORMANCE AT ALL LEVELS AND INTENSIVELY.



## THE FULL PANORAMIC

PROVIDES AN ENHANCED VIEWING EXPERIENCE FOR BOTH SPECTATORS AND PLAYERS. OUR PANORAMIC PADEL COURT HAS 4 CORNER PILLARS, ASSURING PERFECT STABILITY AND SECURITY FOR BOTH INDOOR AND OUTDOOR USE.

# Our Partners



## We build new homes full of positivity and possibility

D/RES is Ireland's leading sustainable private housebuilder. We are on a mission to realise remarkable homes by creating sustainable, inclusive and empowered communities. With primary focus on delivering new homes in the greater Dublin area, we offer unique homes and a lifestyle that works for all stages of life.

For us, it is not just bricks and mortar, it's delivering spaces where individuals, families and communities can live exceptional lives.

Communities can live exceptional lives when people come first in everything we do at D/RES. Our talented team works in partnership with the best in the business to deliver thoughtful, future-proofed homes that anticipate and surpass residents' needs. We create spaces where individuals, families, and communities can live positively and in harmony with their surroundings.

We also understand that buying a home is one of life's major milestones. That's why we take pride in the service we offer, guiding our customers every step of the way and smoothing the path to realise a truly remarkable home.



**PADEL COURT**

# Padel Courts

WH-P01



## SIZE

10M x 20M (OFFICIAL WPT COMPETITION STANDARD)

## LIGHTING

8 × 200 W IP66-RATED WEATHERPROOF LED LIGHTS WITH LAMP POSTS PROVIDING 500 LUX

## STRUCTURE

100% HOT-DIP GALVANIZED COROSION PROTECTION  
STEEL COLUMNS AND TUBES: 3MM (THICKNESS)  
FENCING: 4.0MM HIGH-TENSILE STEEL MESH  
COLOUR CUSTOMIZATION AVAILABLE  
WPT-SPEC NET + GALVANIZED STEEL POSTS  
FULL ASSEMBLY AND INSTALLATION KIT

## GLASS

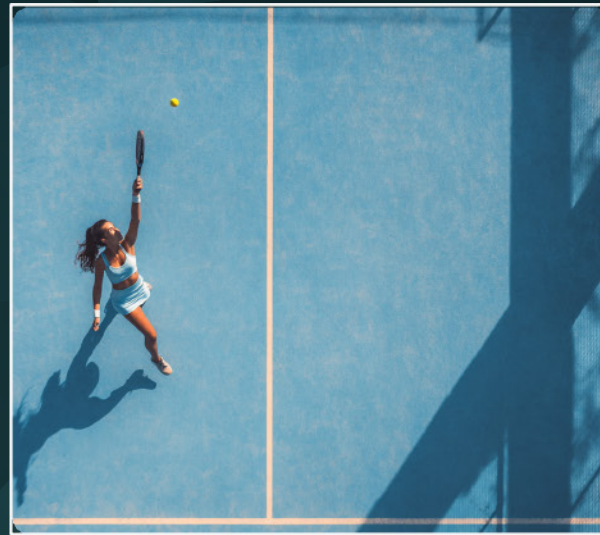
12MM SAFETY TEMPERED GLASS COMPLIANT WITH EN12150-1

## SURFACE

PROFESSIONAL PLAYING SURFACE  
12MM UV-RESISTANT TOURNAMENT-GRADE ARTIFICIAL GRASS  
COLOUR OPTIONS: BLUE, GREEN AND RED



# THE CLASSIC PADEL





# THE PANORAMIC PADEL

WH-P02



## SIZE

10M x 20M (OFFICIAL WPT COMPETITION STANDARD)

## LIGHTING

8 × 200 W IP66-RATED WEATHERPROOF LED LIGHTS WITH LAMP POSTS PROVIDING 500 LUX

## STRUCTURE

100% HOT-DIP GALVANIZED CORROSION PROTECTION  
STEEL COLUMNS AND TUBES: 3MM (THICKNESS)  
FENCING: 4.0MM HIGH-TENSILE STEEL MESH  
COLOUR CUSTOMIZATION AVAILABLE  
WPT-SPEC NET + GALVANIZED STEEL POSTS  
FULL ASSEMBLY AND INSTALLATION KIT

## GLASS

12MM SAFETY TEMPERED GLASS COMPLIANT WITH EN12150-1

## SURFACE

PROFESSIONAL PLAYING SURFACE  
12MM UV-RESISTANT TOURNAMENT-GRADE ARTIFICIAL GRASS  
COLOUR OPTIONS: BLUE, GREEN AND RED



# THE PANORAMIC PADEL





# FULL PANORAMIC PADEL COURT

WH-P03



## SIZE

10M x 20M (OFFICIAL WPT COMPETITION STANDARD)

## LIGHTING

8 × 200 W IP66-RATED WEATHERPROOF LED LIGHTS WITH LAMP POSTS PROVIDING 500 LUX

## STRUCTURE

100% HOT-DIP GALVANIZED CORROSION PROTECTION  
STEEL COLUMNS AND TUBES: 3MM (THICKNESS)  
FENCING: 4.0MM HIGH-TENSILE STEEL MESH  
COLOUR CUSTOMIZATION AVAILABLE  
WPT-SPEC NET + GALVANIZED STEEL POSTS  
FULL ASSEMBLY AND INSTALLATION KIT

## GLASS

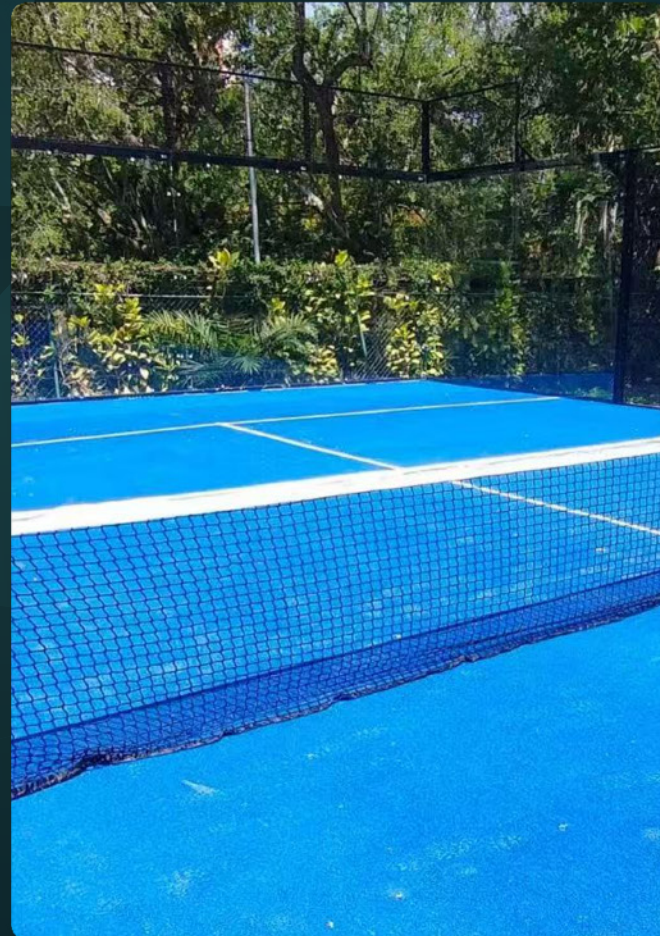
12MM SAFETY TEMPERED GLASS COMPLIANT WITH EN12150-1

## SURFACE

PROFESSIONAL PLAYING SURFACE  
12MM UV-RESISTANT TOURNAMENT-GRADE ARTIFICIAL GRASS  
COLOUR OPTIONS: BLUE, GREEN AND RED



# FULL PANORAMIC





# ROOFED PADEL COURT

WH-P04



## SURFACE

Professional Playing Surface  
12mm UV-Resistant Tournament-Grade Artificial Grass  
Colour Options: Blue, Green, Red

## SURFACE

1-2 Sets Fit in a 40 HQ Container

## SIZE

Overall Structure: 7.2m (W) × 10.8m (H) × 20m (L)  
Playing Court: 10m × 20m (Official Standard Size)

## LIGHTING

4 × Lamp Posts (150mm × 150mm × 5mm, 6.0m Long)  
Weatherproof, outdoor-ready, integrated with the roofed design

## STRUCTURE

Primary: Corner Columns 150mm × 150mm × 5mm (Hot-Dip Galvanized, Qty: 4)  
Roof: Galvanized Steel Framework with Membrane Roof  
Secondary Columns: 100mm × 50mm × 3mm (3m & 2m Lengths)  
Horizontal Tubes:  
• Top: 100mm × 100mm × 3mm (4m & 5m)  
• Bottom: 100mm × 50mm × 3mm (4m & 5m)  
Fencing: 1m × 2m Panels, 4.0mm High-Tensile Wire Mesh  
Material: Steel Grade Q235B  
Finishes: Hot-Dip Galvanizing + Electro-Galvanizing + Powder Coating  
Durability: Wind Resistance up to 100 km/h  
Includes all fittings (plates, flanges, bolts, installation kit)

## GLASS

12mm Safety Tempered Panoramic Glass  
(No frames within glasses for enhanced viewing)



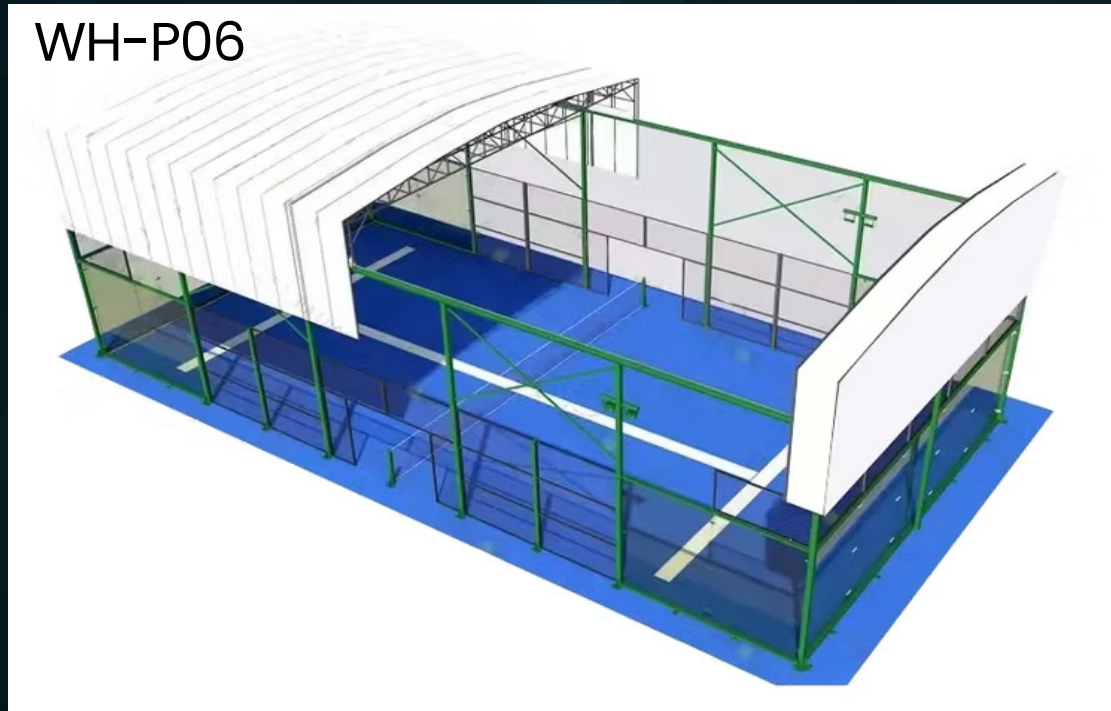
# ROOFED PADEL COURT





# RETRACTABLE ROOF

WH-P06



01

## Model No.

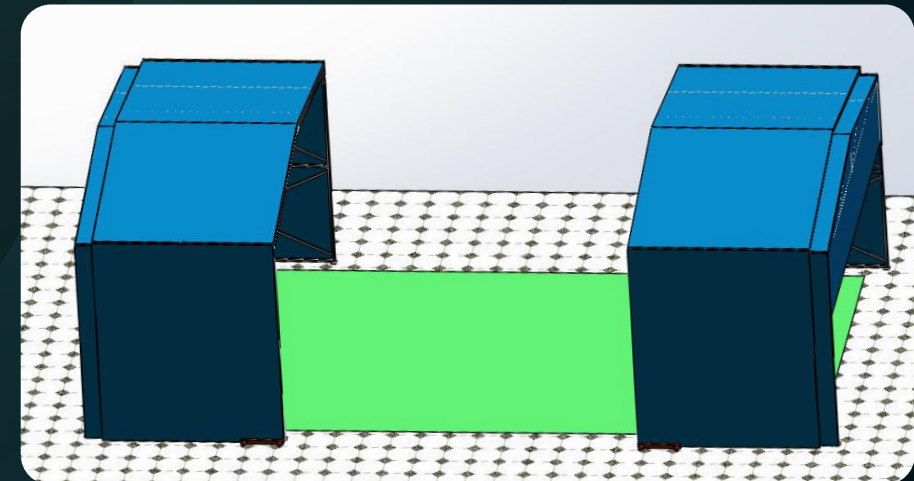
LDK-572801-A

## Product Name

tempered glasses electric retractable roof for padel court  
(22x12m)

## Specifications

1. Court Dimension: 22m length, 12m width , eaves height 7.2m, ridge height 9.2m
2. Electric Track Retractable system
3. High grade steel structure
4. Roof Material: tempered glasses, 5mm+5mm laminated
5. Installation: inground installation with embeded parts



## 02

### Model No.

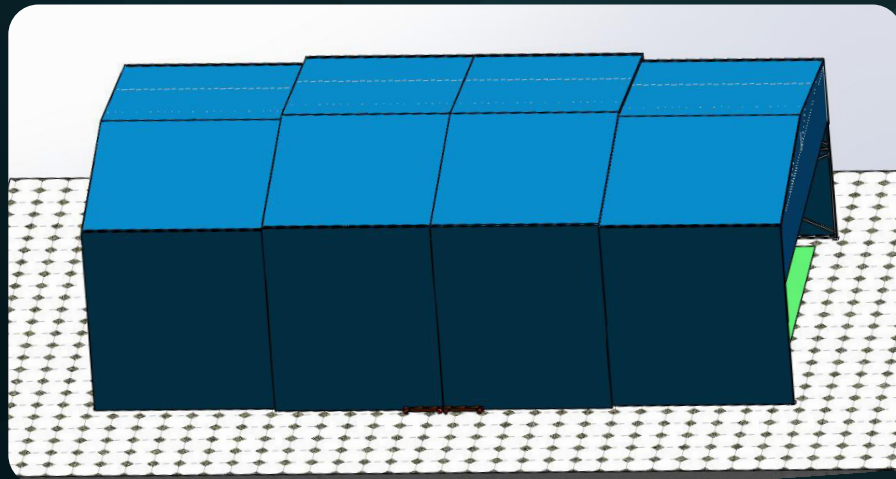
LDK-572801-B

### Product Name

Sunlight Panel electric retractable roof for padel court  
(22x12m)

### Specifications

1. Court Dimension: 22m length, 12m width ,eaves height 7.2m, ridge height 9.2m ,
2. Electric Track Retractable system
3. High grade steel structure
4. Roof Material: 5mm Sunlight Panel
5. Installation: inground installation with embeded parts



## 03

### Model No.

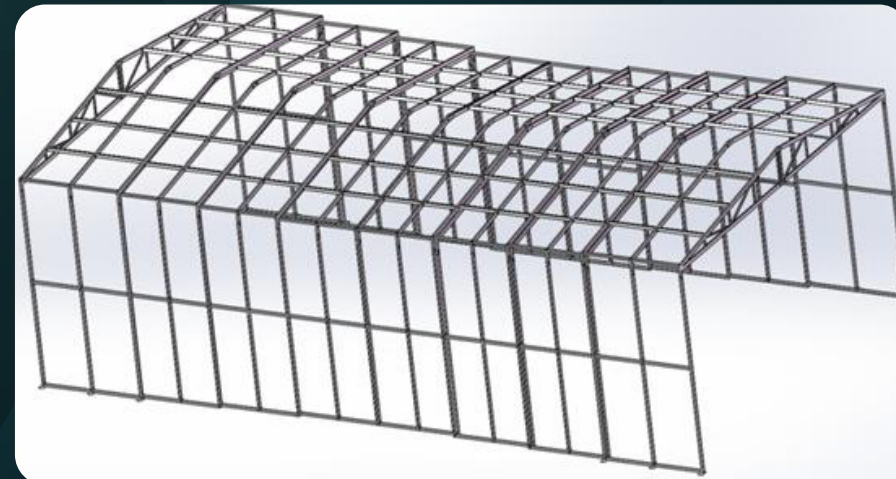
LDK-572801-C

### Product Name

PVDF Film electric retractable cover for padel court  
(22x12m)

### Specifications

1. Court Dimension: 22m length, 12m width ,eaves height 7.2m, ridge height 9.2m ,
2. Electric Track Retractable system
3. High grade steel structure
4. Roof Material: 6000N PVDF film
5. Installation: inground installation with embeded parts





# CONTAINER BAR





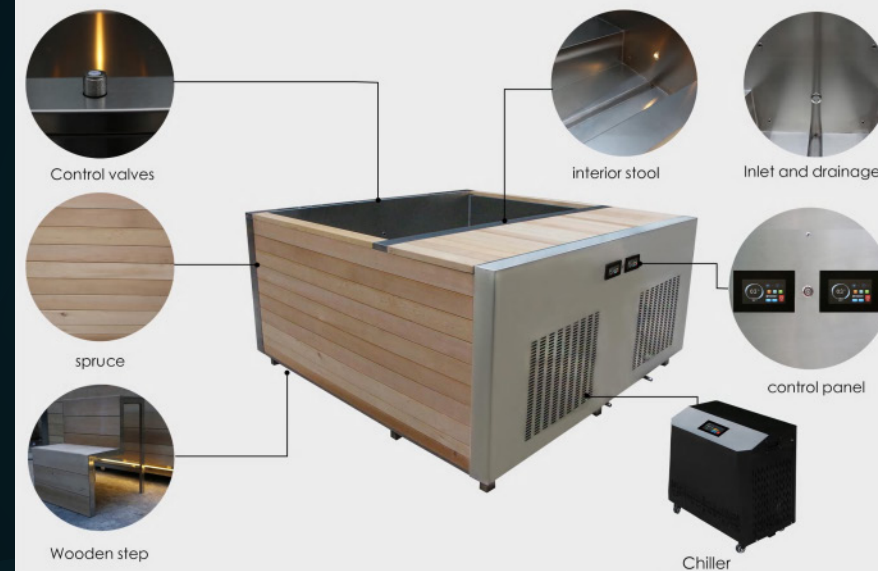
# DOUBLE DECKER | CONTAINER RESTAURANT



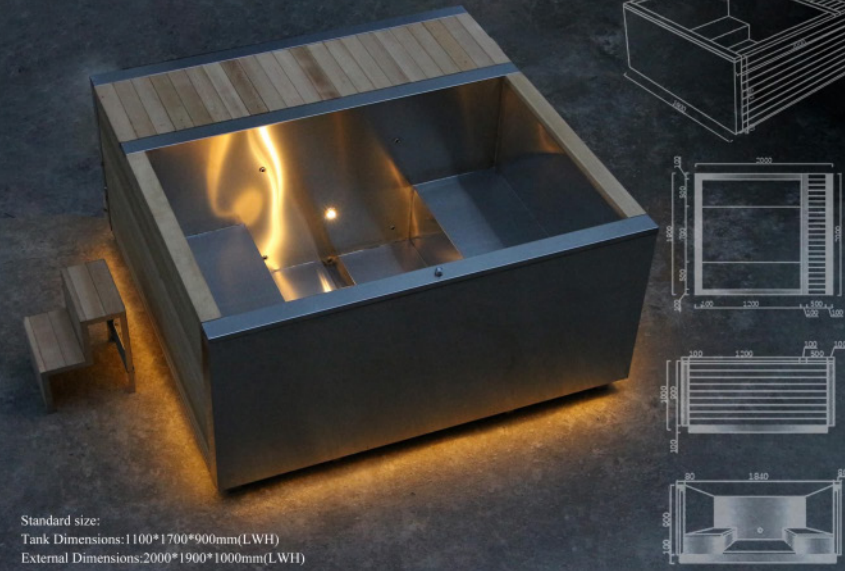


# ICEBATH

Decomposition diagram



Model:CT-17

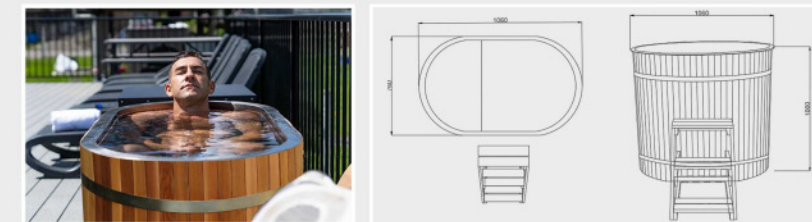


Decomposition diagram



Model:CT-09

This tub comes with an insulation cover and water inlet/outlet, making it convenient to use with our cold water machine (with cooling and heating functions) or a heating stove.



Standard size:  
Tank Dimensions: 1000 \*700\*900mm (LWH)  
External Dimensions: 1060 \*760\*1000mm (LWH)

Decomposition diagram



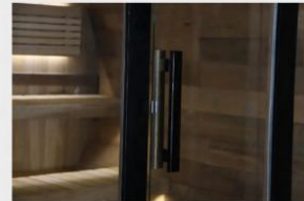


# SAUNA

Model: BP-BS2124

This black barrel sauna is built with high-quality red cedar wood. It has a classic round appearance, natural wood texture and deep black paint, showing a simple and modern design style. The interior design of the sauna is spacious and comfortable, with L-shaped seats, providing users with ample space for relaxation. The seats are made of the same red cedar wood and exude a natural wood fragrance.

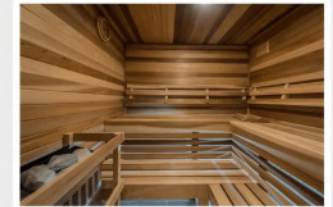
Soft LED lights are also installed inside the sauna, providing warm and comfortable lighting, creating a quiet and relaxing atmosphere. The glass door on the front is made of high-strength tempered glass, which not only ensures safety, but also enhances the visual transparency and allows the light inside to flow freely.



Model: OS-1103

A combined sauna with infrared and Finnish type of heating is an excellent choice for those who do not want to give preference to only one type of relaxing treatment. This version of the sauna is considered one of the most popular today and has a number of advantages:

1. Significant space savings, since not every person has the opportunity to place two saunas in one place.
2. Financial benefit. Turnkey installation of a Finnish sauna and an infrared cabin separately will be significantly more expensive than a combination in one building.
3. User benefit. In the combined infrared sauna, you have the choice of soft dry heat or hot steam.



Model: OS-1102

We have carefully selected wood of the highest quality alongside superb tempered insulating glass in the windows. The kit is self-assembly and is easy to erect after you have levelled the ground. The design can be configured to suit your needs so that the windows or door can be positioned as required.

Screws, nails, 2 sauna benches, backrest and aspen screens are included in the package, along with untreated tongue and groove boards for the roof, although roof cladding is not included. The choice of electric or wood burning stove is also up to you. The project is fun to undertake and requires no prior building experience.

You can configure the sauna as you require by moving the windows, although this also means the door will move as a result.



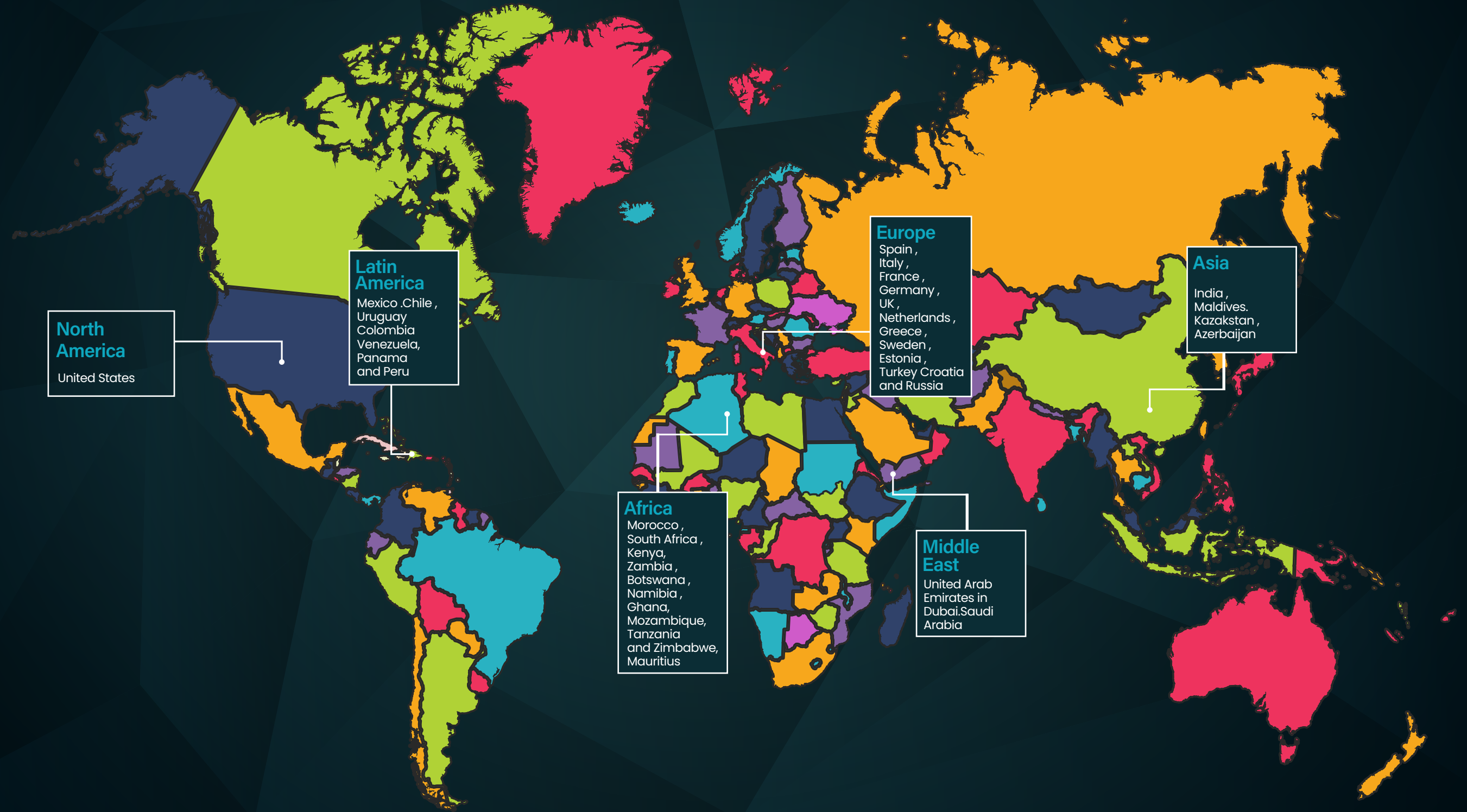
# ADDITIONAL COSTS

ITEM	UNITS	UNIT PRICE	TOTAL PRICE
COURTS	1		TBD
THE CLASSIC PADEL – WH-P01	#	TBD	TBD
THE PANORAMIC PADEL – WH-P02	#	TBD	TBD
THE PANORAMIC PADEL – WH-P03	#	TBD	TBD
SPECIAL DISCOUNT	-5%		
ASSEMBLY	1	TBD	TBD
TRANSPORT (DUBLIN PORT)	1	TBD	TBD
TOTAL	1		TBD



# GLOBAL DISTRIBUTION

Our factory partner has shipped 3000+ courts worldwide





# **WARRANTY TERMS & CONDITIONS**



## WHOLE PADEL COURT SYSTEM WARRANTY

Our complete padel court system includes a comprehensive 5 year warranty from date of installation.

While our system carries a 5-year warranty, you can expect an extended service life of 8+ years with proper maintenance and normal usage conditions.

Should you have any warranty inquiries or need to file a claim, please contact [info@dres.ie](mailto:info@dres.ie) with your specific purchase and installation information.

## COMPONENT-SPECIFIC WARRANTIES

Individual components of the Padel Court System are covered by the following specific warranties, reflecting their unique certifications and material properties:

TÜV Certified LED Lights: 2 years warranty.

CE Certified Artificial Grass: 3 years warranty.

CE Certified Hot-Dip Galvanized Metal Structure: 4 years warranty.

TÜV Certified 12mm Tempered Glass: 10 years warranty

## WHOLE PADEL COURT SYSTEM WARRANTY

This warranty covers defects in materials and workmanship under normal use and service. Coverage is subject to the following conditions. Professional Installation:

The court must be installed by qualified professionals who follow all manufacturer guidelines to ensure proper setup. Consistent Maintenance: All components require adherence to recommended maintenance schedules and best practices to maintain warranty coverage. Appropriate Usage: The court must be utilized exclusively for its intended purpose as a padel playing facility. While the warranty provides 5 years of coverage, the complete system has an expected service life exceeding 8 years when properly maintained and used as intended.

## COMPONENT-SPECIFIC WARRANTIES

This warranty does not cover damage or defects resulting from:

Misuse, abuse, or negligence.

Accidents, vandalism, or unauthorized repairs/modifications.

Acts of God (e.g., extreme weather events, natural disasters).

Normal wear and tear.

Failure to perform recommended maintenance.



# ALL PADEL COURTS: FIP / EU / DIN STANDARD

**FACTORY PARTNER HAS MANUFACTURED AND SHIPPED 3,000+ COURTS**

FACTORY CERTIFICATE GB/T 19001-2016 / ISO 9001:2015

MANUFACTURED TO EN15330 – 1:2013

DESIGNED TO EN 10120-1:2006





ADDRESS: D-Res, House 36, 42 Donnybrook Rd, Donnybrook, Dublin 4, D04 E6X0, Ireland.

Phone: +353 8 73450681 | Email: [info@Dres.ie](mailto:info@Dres.ie)